



**India Meteorological Department
(Ministry of Earth Sciences)**

BULLETIN NO. : 08 (BOB/07/2022)

TIME OF ISSUE: 1220 HOURS IST

DATED: 20.08.2022

FROM: INDIA METEOROLOGICAL DEPARTMENT (FAX NO. 24643965/24699216/24623220)

TO: CONTROL ROOM, NDM, MINISTRY OF HOME AFFAIRS (FAX.NO. 23093750)

CONTROL ROOM NDMA (FAX.NO. 26701729)

CABINET SECRETARIAT (FAX.NO.23012284, 23018638)

PS TO HON'BLE MINISTER FOR S & T AND EARTH SCIENCES (FAX NO.23316745)

SECRETARY, MOES (FAX NO. 24629777)

H.Q. (INTEGRATED DEFENCE STAFF AND CDS) (FAX NO. 23005137/23005147)

DIRECTOR GENERAL, DOORDARSHAN (23385843)

DIRECTOR GENERAL, AIR (23421105, 23421219)

PIB MOES (FAX NO. 23389042)

UNI (FAX NO. 23355841)

D.G. NATIONAL DISASTER RESPONSE FORCE (NDRF) (FAX NO. 26105912, 2436 3260)

DIRECTOR, PUNCTUALITY, INDIAN RAILWAYS (FAX NO. 23388503)

CHIEF SECRETARY, ODISHA (FAX NO. 0674-2536660)

CHIEF SECRETARY, WEST BENGAL (FAX NO. 033-22144328)

CHIEF SECRETARY, CHATTISGARH (FAX NO. 771-2221206)

CHIEF SECRETARY, JHARKHAND (FAX NO. 651-2400255)

CHIEF SECRETARY, GOVT. OF MADHYA PRADESH (FAX NO. 755-2441076)

CHIEF SECRETARY, GOVT. OF MAHARASHTRA (FAX NO. 022- 22028594)

CHIEF SECRETARY, GOVT. OF UTTAR PRADESH (FAX NO. 522- 2239283)

Sub: Deep Depression over south Jharkhand and adjoining North Odisha

The Deep Depression over south Jharkhand and adjoining North Odisha & West Bengal moved west-northwestwards during past 06 hours with a speed of 15 kmph and lay centered at 0830 hrs IST of today, the 20th August, 2022 over south Jharkhand and adjoining North Odisha near latitude 22.7°N and longitude 85.6°E, about 60 km west-southwest of Jamshedpur (Jharkhand), about 70 km south-southeast of Ranchi (Jharkhand), and 170 km east-northeast of Jharsuguda (Odisha).

It would continue to move west-northwestwards across Jharkhand and North Chhattisgarh towards north Madhya Pradesh during next 24 hours and weaken gradually.

Forecast track and intensity are given in the following table:

Date/Time(IST)	Position (Lat. °N/ long. °E)	Maximum sustained surface wind speed (Kmph)	Category of cyclonic disturbance
20.08.22/0830	22.7/85.6	50-60 gusting to 70	Deep Depression
20.08.22/1130	22.9/85.0	45-55 gusting to 65	Deep Depression
20.08.22/1730	23.3/83.8	45-55 gusting to 65	Deep Depression
20.08.22/2330	23.6/82.6	40-50 gusting to 60	Depression
21.08.22/0530	23.8/81.2	40-50 gusting to 60	Depression

Warnings:

Rainfall:

20th August: Rainfall at most places with **heavy to very heavy rainfall** at a few places and **extremely heavy** rainfall at isolated places is very likely over North Chattisgarh & East Madhya Pradesh. Rainfall at most places is very likely with **heavy to very heavy rainfall** at a few places over Northwest Odisha, Jharkhand & Vidarbha. Rainfall at most places with heavy rainfall at isolated places is very likely over remaining parts of southwest Odisha, south Chhattisgarh and West Madhya Pradesh.

21st August: Rainfall at most places with heavy to very heavy rainfall at a few places and extremely heavy rainfall at isolated places is very likely over West Madhya Pradesh and adjoining East Madhya Pradesh. Rainfall at most places is very likely with heavy to very heavy rainfall at isolated places over East Rajasthan and heavy rainfall at isolated places is very likely over Chattisgarh & Vidarbha.

22nd August: Rainfall at most places with heavy to very heavy rainfall at a few places and extremely heavy rainfall at isolated places is very likely over East Rajasthan and heavy rainfall at isolated places is likely over West Rajasthan and North Gujarat region.

23rd August: Rainfall at most places with heavy to very heavy rainfall at isolated places is likely over South Rajasthan & adjoining North Gujarat.

24th August: Rainfall at most places with heavy heavy rainfall at isolated places is likely over Southwest Rajasthan.

Wind:

- **Squally wind speed reaching 40-50 kmph** gusting to 60 kmph is very likely over Northwest & adjoining westcentral Bay of Bengal and along & off Odisha, West Bengal & North Andhra Pradesh coasts during next 12 hours and decrease gradually thereafter.
- **Squally wind speed reaching 35-45 gusting to 55 kmph** is likely over south Jharkhand, northwest Odisha & adjoining areas of Gangetic West Bengal and North Chhattisgarh during next 12 hours and **strong winds speed reaching 30-40 kmph gusting to 50 kmph** is likely to prevail over North Chattisgarh & adjoining areas of Southwest Jharkhand & Northwest Odisha, Northeast Madhya Pradesh and Southeast Uttar Pradesh during subsequent 12 hours.

Sea condition:

Sea condition is likely to be rough to very rough over Northwest & adjoining westcentral Bay of Bengal and along & off Odisha, West Bengal & North Andhra Pradesh coasts till evening of today and improve thereafter.

Fishermen warnings:

Fishermen are advised not to venture into Northwest & adjoining westcentral Bay of Bengal and along & off Odisha, West Bengal & North Andhra Pradesh coasts till evening of today.

Damage expected over Chattisgarh, Madhya Pradesh & Northwest Odisha and Jharkhand:

- Damage to loose/unsecured structures. Some breaches in Kutcha road & embankments due to flooding.
- Damage to small trees like Banana, Papaya etc. and near coastal agriculture due to salt spray. Damage to standing crops and horticulture.
- Localized Flooding of roads, water logging in low lying areas and closure of underpasses.
- Reduction in visibility due to heavy rainfall.
- Disruption of traffic in major cities due to water logging in roads.
- Localized Landslide/Mudslides.
- It may lead to riverine flooding in some river catchments (for riverine flooding please visit Web page of CWC)

Next message will be issued at 1430 hours IST of today, the 20th August, 2022.

(M. Sharma)

Scientist D, Cyclone Warning Division, New Delhi

Copy to: ACWC Mumbai/ ACWC Kolkata/ ACWC Chennai/ CWC Bhubaneswar/CWCVisakhapatnam/ / MO Port Blair/MC Raipur/MC Bhopal/MC Hyderabad/RMC Nagpur/

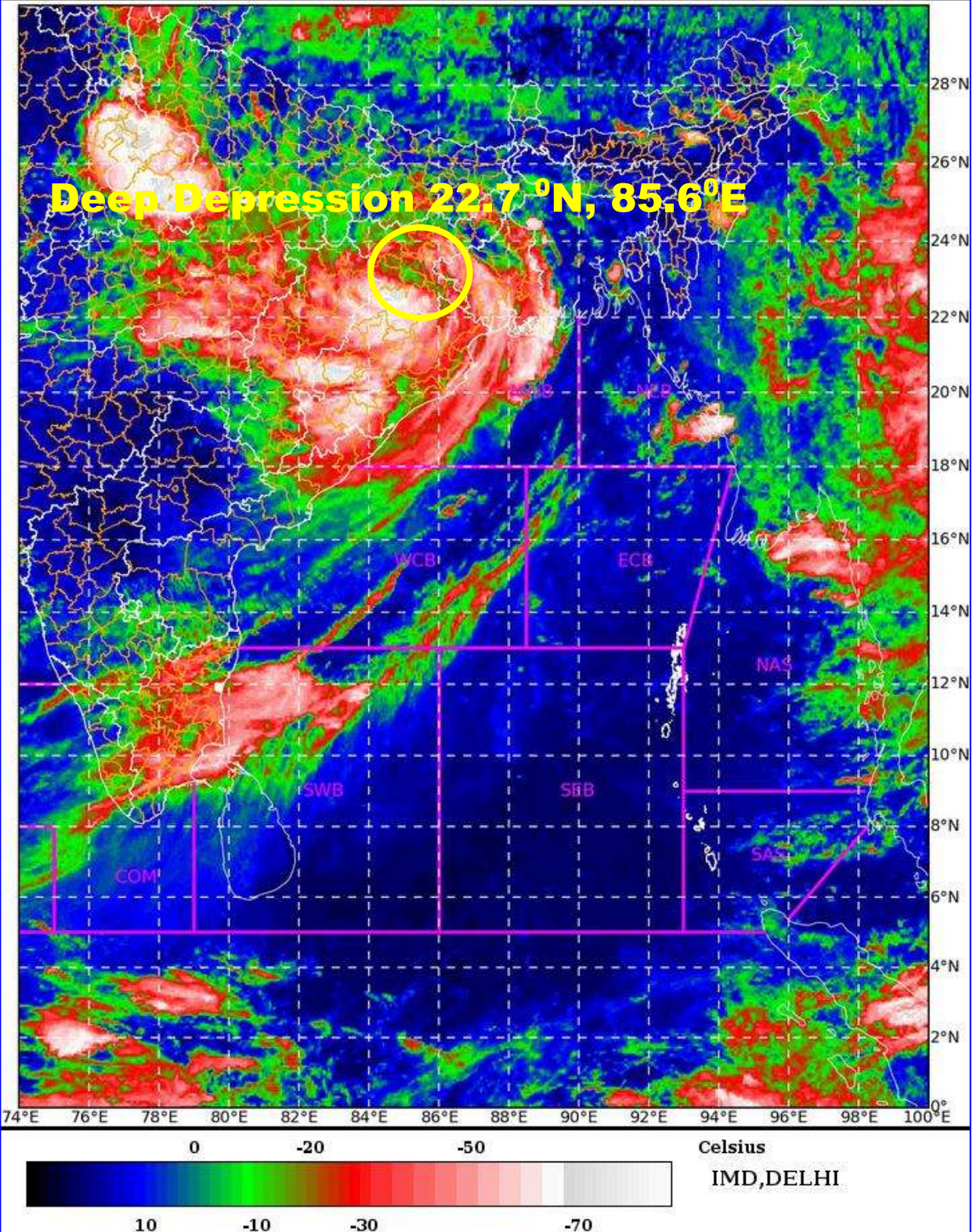
LEGEND: Heavy Rainfall: 64.5 to 115.5mm, **Very Heavy Rainfall:** 115.6 to 204.4mm **Most Places:** more than 76% of total stations, **Isolated Places:** Less than 25% of total

SAT : INSAT-3D IMG 20-08-2022/(0400 to 0426) GMT

IMG_TIR1_TEMP 10.8 um 20-08-2022/(0930 to 0956) IST



L1C Mercator



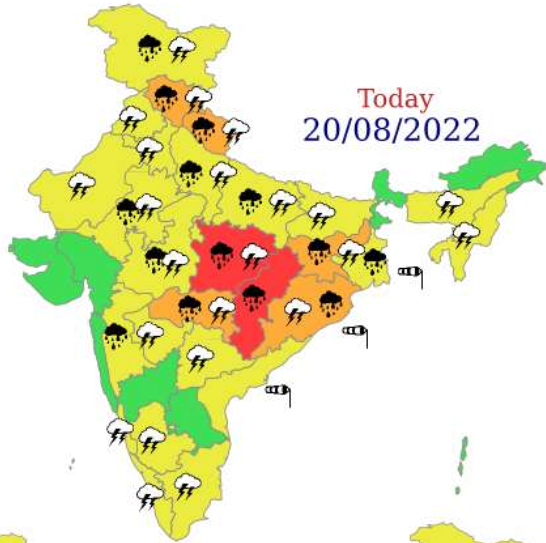


OBSERVED AND FORECAST TRACK ALONGWITH CONE OF UNCERTAINTY OF DEEP DEPRESSION OVER SOUTH JHARKHAND AND ADJOINING NORTH ODISHA BASED ON 0300 UTC OF 20th AUGUST, 2022



DATE/TIME IN UTC
 IST=UTC + 0530
 L: LOW PRESSURE AREA
 WML: WELL MARKED LOW PRESSURE AREA
 D: DEPRESSION (17-27 KT)
 DD: DEEP DEPRESSION (28-33 KT)
 CS: CYCLONIC STORM (34-47 KT)
 SCS: SEVERE CYCLONIC STORM (48-63KT)
 VSCS: VERY SEVERE CYCLONIC STORM (64-89 KT)
 ESCS: EXTREMELY SEVERE CYCLONIC STORM (90-119 KT)
 SuCS: SUPER CYCLONIC STORM (\geq 120 KT)

- LESS THAN 34 KT
- 34-47 KT
- \geq 48 KT
- OBSERVED TRACK
- FORECAST TRACK
- CONE OF UNCERTAINTY



- | | | | |
|--------------|------------|--------------|--------------|
| Heavy Rain | Heavy Snow | Thunderstorm | Dust Storm |
| Strong Winds | Visibility | Cyclone | Squall/ Hail |
| Frost | Cold Wave | Heat Wave | Sea State |

Fishermen warning graphics

Day 1: 20.08.2022/11:30 AM to 21.08.2022/05:30 AM



Day 2: 21.08.2022/05:30 AM to 22.08.2022/05:30 AM



Day 3: 22.08.2022/05:30 AM to 23.08.2022/05:30 AM

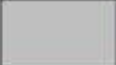
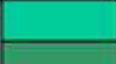



Day 4: 23.08.2022/05:30 AM to 24.08.2022/05:30 AM






Day 5: 24.08.2022/05:30 AM to 25.08.2022/05:30 AM



	Squally WX with wind speed 40-45 <u>gusting to 55 kmph</u>
	Squally wind speed 40-50 <u>kmph</u> <u>gusting to 60 kmph</u>
	Squally wind speed 45-55 <u>kmph</u> <u>gusting to 65 kmph</u>

Probability of exceedance of maximum sustained winds ≥ 45 kmph



Probability of exceedance	
	Low (1-33%)
	Moderate (34-67%)
	High (68-100%)